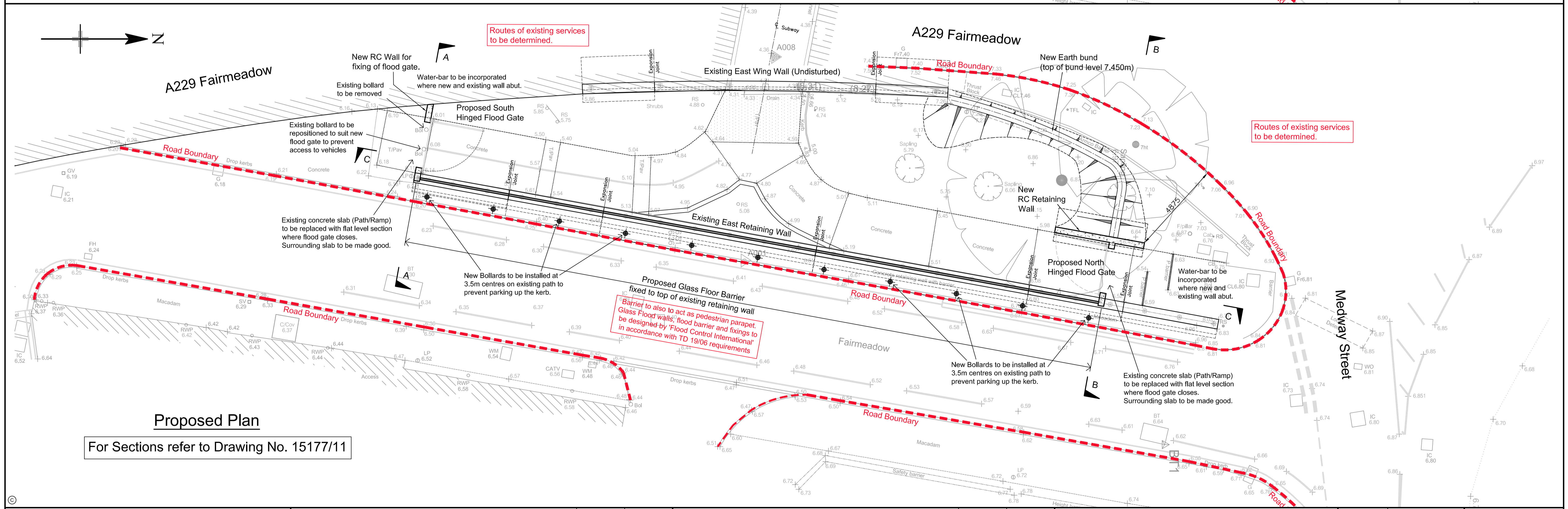


General Notes
 This drawing is to be read in conjunction with all relevant drawing and specifications.
 All levels are in metres.
 All dimensions are in millimetres.
 Concrete Grade C32/40
 Maximum Water/cement Ratio 0.4
 Min Cement/combination content 380 kg/m³
 Allowable cement/combination types IIB, IIB+SR, IIV-V (DC-1)
 Maximum Aggregate size 20mm
 Chloride Content Class Cl 0,30
 Consistence Class S3



For Sections refer to Drawing No. 15177/11

Evans & Langford LLP

- Structural & Civil Engineers
- Land & Building Surveyors
- Geo-Environmental Engineers
- Project Managers
- CDM Consultants
- Contract Administrators

Evans & Langford LLP, 91 King Street, Maidstone, Kent ME14 1BG
 www.evanslangford.co.uk Tel +44 (0) 1622 690120 mail@evanslangford.co.uk

Revisions	Checked	Date
A. Issued for Information	IAW	30/01/20
B. Extent of RC Wall amended to suit gate details.	IAW	30/03/20

Revisions	Checked	Date

Maidstone Borough Council
 Fairmeadow
 Fairmeadow Underpass
 Flood Protection Works - Site Plans

Scale 1:100
 A1

Drawn KJB
 Date Dec 19
 Checked IAW
 Date 30/01/20
 Approved DM
 Date 30/03/20

Drg No. 15177 / 10
 Rev. B